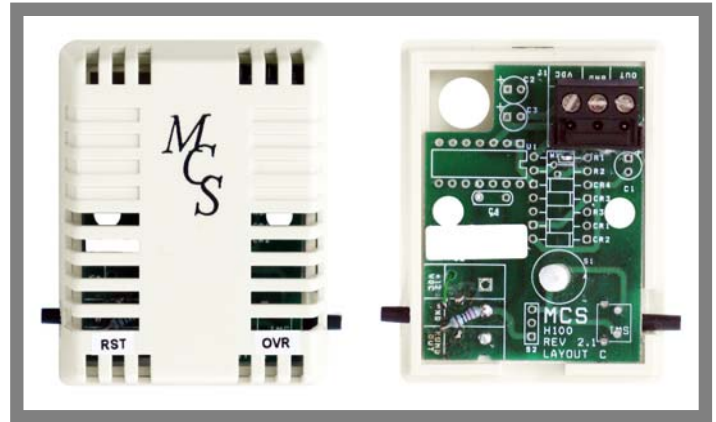




## MCS-ZONE-xxx-yyy Specifications & Description

### Physical Characteristics

Standard Temperature Range .....+32°F to +158°F  
 (0°C to +70°C)  
 Standard Temperature Accuracy .....±0.36° F (±0.2°C)  
 Extended Temperature Range.....-40°F to +248° F  
 (-40°C to 120°C)  
 Extended Temperature Accuracy .....±1.5°F (±0.8°C)  
 Resistance Range .....2 Meg to 286 ohms  
 Input Voltage.....5vdc  
 Sensor Resistance.....100,000 ohms @ 77°F (25°C)  
 Operating Temperature.....-40°F to +185°F  
 (-40°C to 85°C)  
 Storage Temperature.....-60°F to +230°F  
 (-51°C to 110°C)  
 Packaging Dimensions .....2.00"W x 2.57"L x 1.50" H



Part # **MCS-ZONE-OVR-RST**  
 (Pictured with Override & Reset Options Included)

### Physical Description

An extremely reliable sensor packaged in a very durable aesthetic package. The sensor is potted with a thermally conductive adhesive to guarantee durability and response, its high accuracy allows for interchangeability in the field.

The large resistance range allows the use of over 1000' of cable with no noticeable effect. The table below provides a cross reference between °F/°C, OHMS, and VOLTS DC at the sensor input pin (S1) on the MCS controller.

### Product Specifications

Temp (°F / °C)	Resist (ohms)	S1 (vdc)
-40/-40	4,015,500	0.121
-35/37.2	3,324,096	0.146
-30/34.4	2,760,524	0.175
-25/-31.6	2,299,670	0.208
-20/-28.9	1,921,640	0.247
-15/-26.1	1,610,592	0.292
-10/-23.3	1,353,866	0.344
-5/-20.6	1,141,345	0.403
0 /-17.7	964,963	0.470
5/-15.0	818,070	0.545
10/-12.2	695,433	0.629
15 /-9.4	592,755	0.722
20/-6.6	506,560	0.824
25/-3.8	434,007	0.936
30/-1.1	372,778	1.058

Temp (°F / °C)	Resist (ohms)	S1 (vdc)
32/0	351,020	1.109
35/1.6	320,976	1.188
38/3.3	293,758	1.270
40/4.4	277,040	1.326
45/7.2	239,686	1.472
50/10	207,850	1.624
55/12.7	180,647	1.782
58/14.4	166,243	1.878
60/15.5	157,353	1.943
65/18.3	137,363	2.106
70/21.1	120,169	2.271
75/23.9	105,347	2.435
80/26.7	92,541	2.597
85/29.4	81,454	2.756
90/32.2	71,838	2.910

Temp (°F / °C)	Resist (ohms)	S1 (vdc)
95/35	63,480	3.058
100/37.7	56,200	3.201
104/40	51,050	3.310
105/40.5	49,846	3.337
110/43.3	44,287	3.465
113/45	41,290	3.539
115/46.1	39,420	3.586
120/48.8	35,149	3.370
125/51.6	31,399	3.805
130/54.4	28,093	3.903
135/57.2	25,173	3.994
140/60	22,590	4.079
145/62.8	20,309	4.156
150/65.5	18,284	4.227
155/68.3	16,484	4.292

Temp (°F / °C)	Resist (ohms)	S1 (vdc)
158/70	15,500	4.329
160/71.1	14,881	4.352
165/73.8	13,456	4.407
167/75	12,930	4.428
170/76.6	12,185	4.457
175/79.4	11,052	4.502
180/82.2	10,033	4.544
183/83.8	9,474	4.567
185/85	9,121	4.582
190/87.7	8,303	4.617
195/90.5	7,567	4.648
198/92.2	7,162	4.666
200/93.3	6,906	4.677
203/95	6,541	4.693
205/96.1	6,310	4.703

Temp (°F / °C)	Resist (ohms)	S1 (vdc)
208/97.7	5,981	4.718
210/98.8	5,773	4.727
212/100	5,573	4.736
215/101.6	5,289	4.749
218/103.3	5,020	4.761
220/104.4	4,849	4.769
223/106.1	4,605	4.780
225/107.2	4,449	4.787
227/108.3	4,299	4.794
230/110	4,085	4.804
233/111.6	3,886	4.813
235/112.7	3,760	4.819
240/115.5	3,463	4.833
245/118.3	3,191	4.845
248/120	3,040	4.852

### Options

- OVR** Pressing the Override button for 2 sec results in the system going from unoccupied to occupied mode for the time that was setup in the override set point.
- RST** Pressing the Reset button for 2 sec decreases The target & pressing it for 6 sec increases the Target. Targets are restored to original set points at Midnight. (Only for MicroMag)